



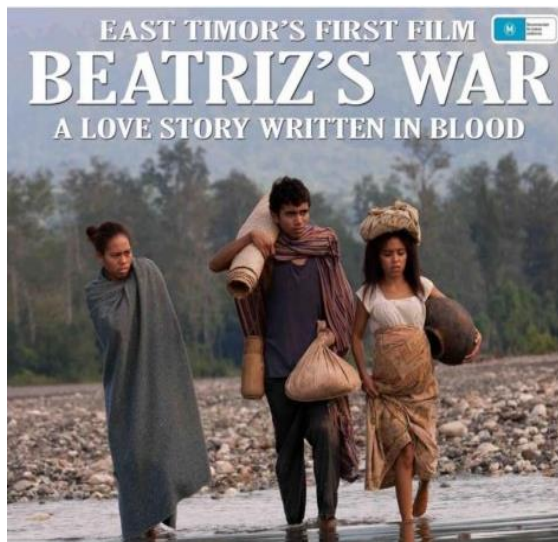
NEWSLETTER NOVEMBER 2019

Where does our money come from? Where does it go? This newsletter focuses on some of our fundraising activities during 2019, and outlines some projects we currently undertake.

Would you like to assist? Email redmondha@gmail.com to discuss ways you could help with our work.

FUND RAISING ACTIVITIES

- **Film nights and performances**



Another, earlier, performance this year was 'Ned Kelly's Mother', a very powerful one-woman show, put on in conjunction with The Wangaratta Players in March. Another strong female character, and another opportunity to spread the word about our projects, as well as entertain and fundraise.

- **Coffee sales:**

We sell pure Timorese coffee at the Farmers Market in Wangaratta (in warmer months), or you can collect yours through Judy Grylls (Wangaratta -0419 195056) or Barbara Broz (Myrtleford - 57222051)



- **Open Gardens**



Thanks to the generosity of the owners of two very different but equally inspirational Wangaratta gardens this year, we raised \$4076 towards education in Lacluta. Wangaratta Concert Band and Sing Australia entertained visitors during the afternoon.

Watch out for the gardens opening on the 2nd Sunday in October 2020.

WHERE DO OUR FUNDS GO? Here are just two examples of what we do with monies that come our way.

Education is a very high priority for us:



The **Liaison Officer** position created this year has really increased the impact of our work in the community. Sadly, our wonderful Elio has resigned to take up a role with the 247 visa scheme in northern Australia. We are starting the search for his replacement, to be appointed during our 2020 in-country visits.



WHERE DO DONATED RESOURCES GO?

Just 3 examples of projects using goods and labour donated by people of North East Victoria – and beyond - for the benefit of the people of Lacluta

Disability support



Days for Girls and Mother and Baby packs



Womens sewing groups



If you would like to support our work, visit us on Facebook:

<https://www.facebook.com/FriendsOfLaclutaWangaratta>

or our webpage:

<http://www.friendsoflacluta.org/>

or become an Associate Member for \$20 p.a. by emailing enquiries@friendsoflacluta.org